

## Valuable pre-tax benefits with convenient tools

**Why not use pre-tax dollars to pay for medical co-pays, prescriptions, and/or daycare fees, thereby reducing your taxable income and increasing your take-home pay? It's a no-brainer.**

The pre-tax advantages of a Flexible Spending Account (FSA) allow you to save up to **up to 30%** on your eligible healthcare and/or dependent care expenses every year. Consider how much you spend on these costs for you and your qualified dependents in one year and how much you could save by using pre-tax dollars.

### How it Works

FlexSystem FSA is offered through your employer and is administered by TASC. When you choose to enroll in a FlexSystem Healthcare and/or Dependent Care FSA, you determine the dollar amount you want to contribute to each account based on your estimated expenses for the upcoming Plan Year. Your contributions will be deducted in equal amounts from each paycheck, **pre-tax**, throughout the Plan Year.

**The more you contribute to these accounts, the lower you reduce your taxable gross salary. And with less taxes taken, your take-home pay increases!**

Your total annual Healthcare FSA contribution amount is available immediately at the start of the Plan Year. Dependent Care FSA funds are available up to the current account balance only.

### Online Enrollment and Contributions

Annual FSA contributions are set by your employer, but are limited to the IRS maximums per Plan Year. View current IRS limits at: [www.tasconline.com/biz-resource-center/benefits-limits/](http://www.tasconline.com/biz-resource-center/benefits-limits/)

Use our **online tax-savings calculator** to help determine how much you should contribute to each FlexSystem account per year.



### The TASC Card Convenience

Enjoy easy access to your FSA funds with the swipe of a card instead of out-of-pocket spending and requesting a reimbursement!

### Pre-Tax Savings Example

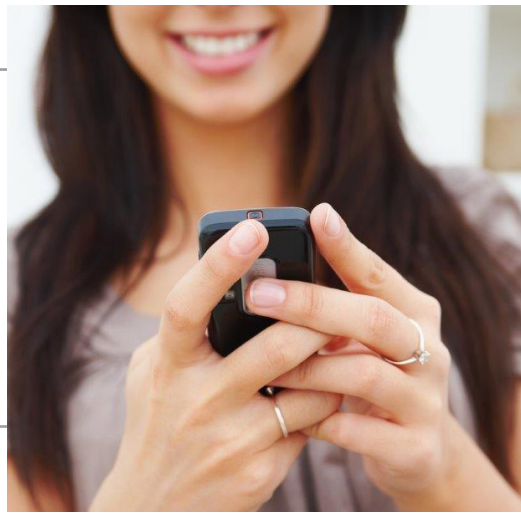
	<i>Without FSA</i>	<i>With FSA</i>
Gross Monthly Pay:	\$3,500	\$3,500
<b>Pre-Tax Contributions</b>		
Medical/Dental Premiums	\$0	-\$125
Medical Expenses	\$0	-\$75
Dependent Care Expenses	\$0	-\$400
<b>TOTAL:</b>	\$0	<b>-\$600</b>
<b>Taxable Monthly Income</b>	<b>\$3,500</b>	<b>\$2,900</b>
Taxes (federal, state, FICA):	-\$968	-\$802
<b>Out-of-pocket Expenses:</b>	<b>-\$600</b>	<b>\$0</b>
<b>Monthly Take-home Pay:</b>	<b>\$1,932</b>	<b>\$2,098</b>

**Net Increase in Take-Home Pay = \$166/mo!**

For illustration only. Actual dollar amounts may vary.

### Carryover puts your mind at ease!

When your employer elects the Carryover option with your Healthcare FSA Plan, up to \$500 of any leftover healthcare funds may be carried over into the next Plan Year with no cost or penalty.



Multiple self-service tools available to easily manage your FlexSystem account(s) and TASC Card transactions:

MyTASC Online: [www.tasconline.com](http://www.tasconline.com)

MyTASC Mobile App: [www.tasconline.com/mobile](http://www.tasconline.com/mobile)

MyTASC Text Messaging (SMS)

## How to Access Your FSA Funds

As eligible expenses are incurred, you have two options to access your available FlexSystem FSA funds:

**1) TASC Benefits Card:** upon enrollment into the Plan, you will receive a TASC Card in the mail, which can be used to pay for eligible expenses at the point of purchase. Simply swipe your TASC Card where MasterCard is accepted.

With smart card technology, the TASC Card automatically pays for and substantiates most eligible expenses without requiring any paperwork.

**2) Request a Reimbursement:** simply submit a request for reimbursement to FlexSystem using one of the following methods:

- Submit via MyTASC Mobile App (free download)
- Submit via MyTASC Text Message (SMS)
- Download Request for Reimbursement form online (paper)

Your reimbursement is direct deposited into your **MyCash account** or a designated bank account. MyCash funds are accessible via your TASC Card to be used for **any** type of purchase or ATM cash withdrawal.

## Eligible Expenses

FlexSystem FSA funds may only be used for eligible expenses under your healthcare FSA and/or dependent care FSA. Some eligible expenses include:

- Medical/dental office visit co-pays
- Dental/Orthodontic care services
- Eye exams and prescription glasses/lenses
- Prescriptions
- Vaccinations
- Daycare Fees

A complete list can be found at [www.irs.gov](http://www.irs.gov) in IRS Publications 502 & 503. Please note insurance premiums are NOT eligible for reimbursement.

## Important Considerations

### ***FSA Funds do not Rollover:***

It is important to be conservative in making elections because any unused funds left in your FSA at the close of the Plan Year are not refundable to you (the only exception to this rule is for the Healthcare FSA where funds (up to \$500) may carryover to the next Plan Year Healthcare FSA when elected by your employer). You are urged to take precautionary steps, such as tracking account balances on the FlexSystem website and/or using the Interactive Voice Response System, to avoid having funds remaining in your account at year-end.

### ***Changing Elections During the Plan Year:***

You may change your FSA elections during the Plan Year only if you experience a change of status such as:

- a marriage or divorce
- birth or adoption of a child, or
- a change in employment status

Refer to the *Change of Election Form* (available from your employer) for a complete list of circumstances acceptable for changing elections mid-year.